

FOR SALE or LEASE

**1198 S. Arlington Street
Akron, Ohio**

Approximately 4,160 sf available



Description: Freestanding building located on the SW corner of South Arlington and E. Wilbeth. The building sits at a light adjacent to Popeye's Chicken on .48 acres. Pylon sign at the corner.

Nearby Tenants: Save A Lot, Roses Express, Aldi's, Cititrends, Goodwill, Family Dollar, Auto Zone, O'Reilly's, Circle K, Burger King, Walgreens, Family Video, etc.

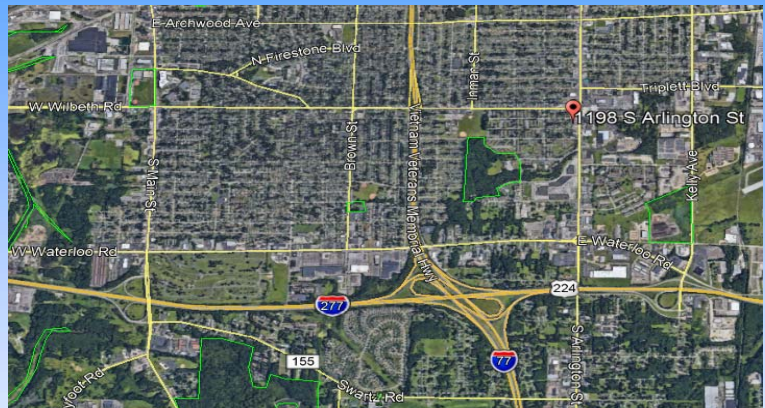
Demographics:

Population:

1 mile: 14,020
3 miles: 86,274
5 miles: 195,767

Median Household Income:

1 mile: \$27,907
3 miles: \$33,163
5 miles: \$36,953

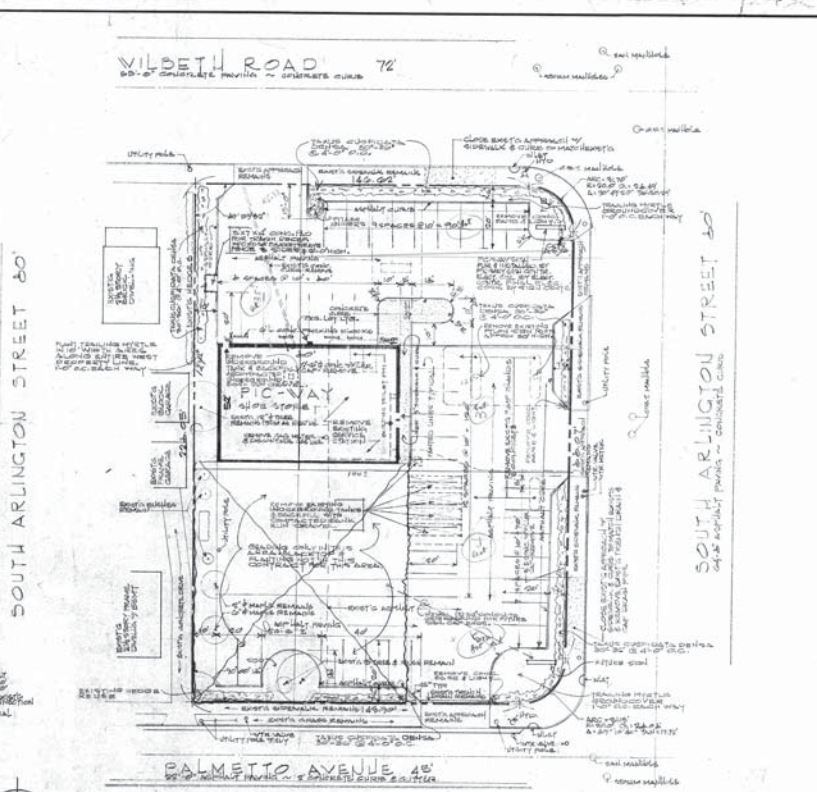
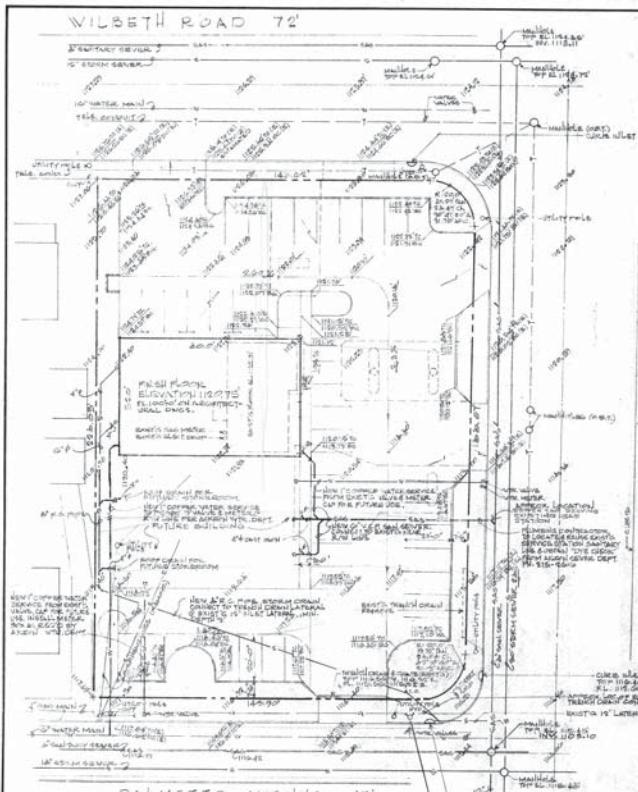


For more information contact:
Craig Cohen
Craig@CohenCommercialGroup.com



Cohen Commercial Group
3690 Orange Place, Suite 111
Beachwood, Ohio 44122
(216) 223-5060

The information submitted herein is not guaranteed. Although obtained from reliable sources, it is subject to errors, omissions, prior sale/lease and withdrawal from the market without notice. Cohen Commercial Group, its affiliates, agents, and employees, and Seller/Landlord make no representations about the accuracy of said information and recommend individual investigation to certify its validity.



GRADING & UTILITY PLAN
SCALE 1" = 20'

SYMBOLS & ABBREVIATIONS

- GRAVITY SEWER
- WATER MAIN
- STORM SEWER
- WATER LINE
- HYDRO-PNEUMATIC
- SANITARY
- ELECTRIC LINE
- GAS LINE
- TELEPHONE
- CABLE
- EASEMENT
- ELEVATION
- BENCH MARK
- EXISTING
- PROPOSED

NOTE: REMOVE ALL EXISTING ASPHALT PAVING & DISPOSE OF OFF OF THE SITE.

SITE PLAN
SCALE 1" = 20'

BOUNDARY LINES & EXISTING GRADERS FROM A SURVEY BY GEORGE L. BRIDGEMAN, S. & A. L. L. P. 20
STATE OF OHIO LAND SURVEYOR
OHIO NO. 8-202749, 201 BIRMINGHAM
ST. CINCINNATI, OHIO 45206

ANY DEVIATION FROM THIS SET OF PLANS & SPECIFICATIONS SHALL BE APPROVED BY THE ARCHITECT OR THE OWNER BY WRITTEN CHANGE ORDER.

WILBETH ROAD 72

WILBETH ROAD 72

SOUTH ARLINGTON STREET 80'

PALMETTO AVENUE 45'

DATE: 11-15-75

REVISIONS:

COMMISSION NO. 77-52

PIC-WAY SHOE MALL

CURTIS N. LINDBERG ARCHITECT

1500 WEST FIFTH AVENUE
COLUMBUS, OHIO

1